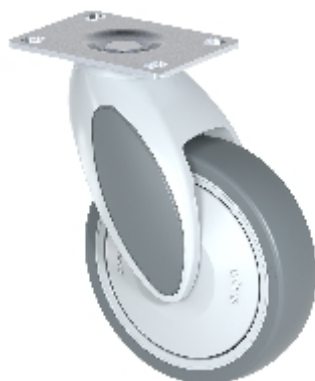







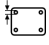
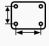


Swivel:

KSL2-51C-P100 (VIVAX 2.0)

ASO



Dane techniczne

Średnica		125 mm
Szerokość koła		32 mm
Wysokość montażowa		168,5 mm
Wysunięcie		46 mm
Wymiary		100x80 mm
Grubość otworu na śrubę		8 mm
Odległość pomiędzy otworami na śruby (SE)		80/75x60/55 mm
Nośność		100 kg
Waga		720 g

