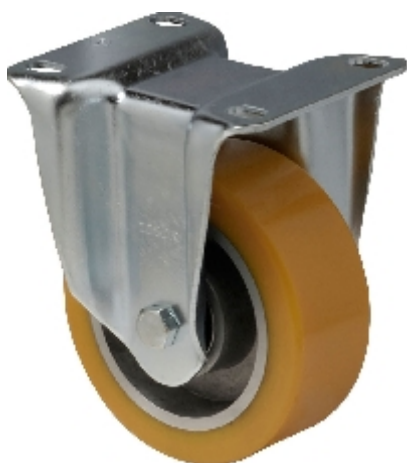





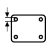
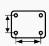




Fixed:

FSAU 1002 6150



Dane techniczne

Średnica		100 mm
Szerokość koła		40 mm
Hub length		45 mm
Wysokość montażowa		130 mm
Wymiary		105 x 85 mm
Średnica otworu na śrubę		11 mm
Odległość pomiędzy otworami na śruby (SE)		80 x 60 mm
Nośność		200 kg
Weight		1 kg

